

5 Crandon Crt

Table of Contents

- | [Property Details](#)
- | [Photo Gallery](#)
- | [Map](#)
- | [Contact For Inspection](#)

Property Details

5 Crandon Court, GOONELLABAH



SOLD BY THE WAL MURRAY TEAM

6  3  2 

Be amazed by what this home has to offer. Huge family home ♦ with stunning renovations throughout giving a stylish modern look. All the hard works been done ready for the whole family to enjoy.

The home consists a total of 6 bedrooms and 3 bathrooms over 2 levels. Upstairs ♦ consists of 5 bedrooms, main with new ensuite plus a huge open plan living area with air-conditioning. The new ensuite is incredible, floor to ceilings tiles with an open shower design. All bedrooms are spacious, with built-in robes, ceiling fans plus the main has its own private balcony.

Be amazed with the stunning new galley style kitchen. Beautifully designed with plenty of cupboard space, modern appliances, plus breakfast bar to accommodate the family. Flowing outside is the covered timber deck ♦ giving great outdoor dining space to entertain or a private place to sit and relax.

For the large family, downstairs includes the 6th bedroom with ensuite plus the large 2nd living area. Perfect for the teenagers retreat, media room or rumpus.

Outside the home is the large landscaped surrounds ♦ 1120m2 with access to side of home. This large block is suitable for future shed or pool, space to park a van/trailer.

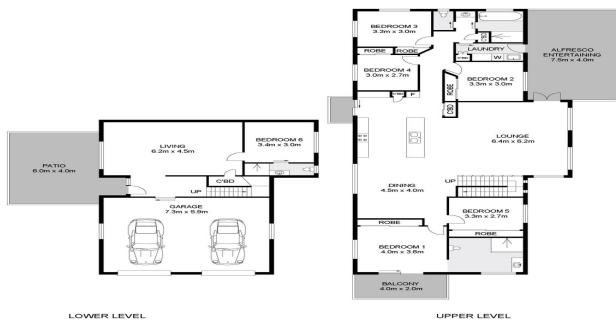
Privately located on a quiet street, an inspection is a must to appreciate what this property has to offer. New paint and new floor coverings ready for you to call home. Call today.

- 6 Bedrooms
- 3 Bathrooms
- 2 Garages
- Air Conditioning
- Deck
- Outdoor Entertaining
- Built In Robes
- Dishwasher

\$610,000

Photo Gallery



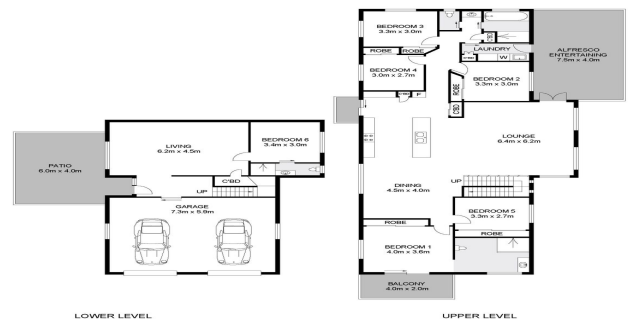


Scale in meters, indicative only. Dimensions are approximate. All information contained herein gathered from sources we believe to be reliable. However we cannot guarantee its accuracy and information presented should only be taken as an indication.

5 Crandon Court, Goonellabah

ENT: 220.3m²
EXT: 60.2m²
GARAGE: 50.5m²

First National Real Estate
Wal Murray & Co



Scale in meters, indicative only. Dimensions are approximate. All information contained herein gathered from sources we believe to be reliable. However we cannot guarantee its accuracy and information presented should only be taken as an indication.

5 Crandon Court, Goonellabah

ENT: 220.3m²
EXT: 60.2m²
GARAGE: 50.5m²

First National Real Estate
Wal Murray & Co

Map



Contact For Inspection



BENJAMIN CONTE

LICENSED REAL ESTATE AGENT

0408 368 913

ben@walmurray.com.au